



St. Patrick's Catholic Primary School

PREP TO YEAR 6

35 Mulgrave Street, Bundaberg West, Q 4670
T 07 4152 1380 | F 07 4152 7125

Important Dates for Week 6

- Monday—Parish Mass
9am—Year 4
- Tuesday -Thursday Morning
Prayer 8.45am—4L
- Friday—School Assembly
10.25am 2B
- Friday—Class Liturgy
8.45am 4A



ATHLETICS carnival

**FIELD EVENTS DAY-
Monday, 12 June
(Students Born 2004,
2005, 2006 & 2007)**

**100m & 200 HEATS:
Wednesday, 14 June
(Students Born 2004,
2005, 2006 & 2007)**

**CARNIVAL DAY
(SENIOR SCHOOL),
Shalom College:
Wednesday, 21 June
(Students Born 2004,
2005, 2006, 2007 &
2008)**

**CARNIVAL DAY
(JUNIOR SCHOOL)
St Patrick's: Thursday,
22 June (Students Born
2009, 2010, 2011 &
2012)**



Term 2, Week 5

19 May 2017

Principal's News

Last Sunday evening, I attended Mass at Holy Rosary to celebrate with Jed Morley and her elder daughters, as they were welcomed into the Catholic Church. Fr Andrew presided over a beautiful ceremony of welcome. Within the service, he spoke of how the essence of Jesus is revealed through the Gospels. We get to know the man Jesus through the stories he told, and the stories told about him. Today 2 000 years later, those words written in the Gospel, are still transforming lives. Just last weekend for example, our parish welcomed five babies and six adults into our Church. People today still find meaning in the Gospels, and those words change their lives for ever.

Our words and our actions as parents and as teachers, also have the power to change and transform lives. It's not the words that are rehearsed or within long speeches. It's the quiet words of forgiveness, understanding, and pride delivered at just the right time, that builds people. Similarly the words that demean, ridicule or deliberately embarrass, always harm, and can never be 'unsaid'. We all know of families, friendships and relationships that have never recovered because of one hurtful conversation.

The people in our lives will remember how we made them feel and so we all have a huge responsibility to ensure we use our words to build. The note below is to Gemma Henricksen whom many of you will know. Gemma has health issues, and we included her in our prayers last week. It is from her sister Kelsie, and to me it shows the power of words.

"I think it says a lot about a person by who they look up to, who they aspire to be, how to act and what to drive towards. Gem, you are all of those things to me, my best friend, my role model, the biggest celebrity in my life. Everyday you show me more and more reasons to push myself and strive towards what I want to do with my life. The last 19 years I have constantly followed your foot steps cause I always thought you were cool. But these last few years and especially these last few weeks, you have astounded me with everything you do. Last night was a clear example of you striving towards something you feel so passionate about – surf lifesaving, the beach and giving back to people. You are beautiful, you are strong and you are always a winner to me. I could not be more grateful to have you by my side."
Written by Kelsey Henricksen.

Thank you so much for the enormous support for our Mothers' Day Liturgy last Friday. Your presence expressed more love than words can convey. If you were there, you definitely experienced something very special. The Mothers' Morning Tea from our Parents' and Friends' also beautifully affirmed what a wonderful community we have. Amazing.

Mark Fox



Click our school crest to go our school website calendar.



Click the facebook icon to go to our school facebook page.

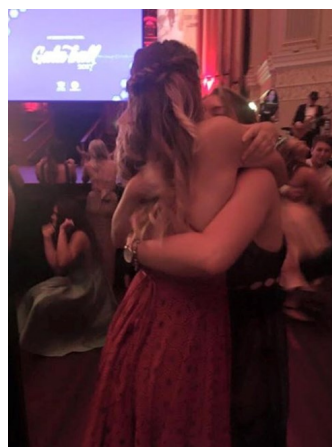


Click the Parish logo to go to the Parish Newsletter.



Centacare

Click the Centacare logo to go the Group Programs Calendar.



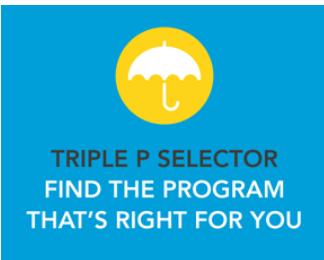
Federal Government changes create uncertainty for school funding

You may have seen or heard recent media coverage about the Federal Government's Quality Schools website which purports to show what federal funding flows to our school.

The model used to generate the figures does not accurately show actual funding received by our school. The 2017 figures for our school have been generated using projections and assumptions which the Government has not fully disclosed to Catholic School Authorities. The projections must therefore be viewed with considerable caution. Furthermore, the Government's projections do not take into account the way Catholic schools operate as a system. The Government recognises the benefit of local knowledge and allows the Catholic sector to redirect funding to ensure that these locally identified areas of particular need for students and schools are most appropriately supported. This enables our Catholic systems to most effectively provide students in all our schools with the best possible opportunities for success.

Information about actual funding received by schools from all sources is available on the My School website.

Please click [here](#) to view the Q&A regarding these changes.



Triple P Parenting

Find the free parenting support that's right for you!

The Triple P – Positive Parenting Program now has an online app to help you decide what type of free parenting support is right for you. In just three clicks you'll answer two simple multiple-choice questions and be matched with a positive parenting program that suits your parenting needs. You can find the Triple P Selector by clicking the image to the left.

Flu Season Reminder



As you are aware every year Queensland experiences an influenza or flu season. As we enter this season it is timely to remind parents and care-givers not to be complacent about flu.

Flu is a virus more serious than the common cold and can be spread through talking, coughing and sneezing. Symptoms include sudden fever, dry cough, muscle aches and pains, fatigue, headache, sore throat and a stuffy or runny nose.

If your child has flu-like symptoms, the following is advised:

- Keep your child home from school;
- Ensure your child washes their hands regularly with soap and water or sanitiser gel;
- Encourage your children when coughing or sneezing, to cover their mouth and nose with disposable tissues which should be disposed of immediately;
- Ensure they drink plenty of fluids and get lots of rest;
- Consult your doctor if you are concerned about their symptoms.

The school requests that anyone displaying flu-like symptoms stay at home until such symptoms have passed. Families should also reinforce the recommended protective actions listed above.

Increased awareness and ongoing attention to prevention and control measures, such as vaccination and good hygiene, are steps that we can all promote to reduce the impact of influenza.

Your invitation...



RSVP

Dr Debbie Pushor is returning to our Queensland Dioceses to build on our Parent Engagement knowledge

Debbie is a Professor of Curriculum Studies, University of Saskatchewan, Canada. In this role she is undertaking extensive research into parent engagement. Debbie is a teacher, consultant and principal and she brings a wealth of relevant information and exciting opportunities for parents to engage.

Parents, Teachers, Staff and Principals are invited to attend this **free event**.

Debbie will widen her conversation about Parent Engagement in your school community. 2 sessions have been organised for you. Your investment of time will be well worth it.

EVENT DETAILS

DATE: Monday 22 May

LOCATION: Shalom College

9 Fitzgerald St, Bundaberg

TIME: Principals/Staff session 3.45pm

Parent Session 7.30pm

DURATION: Approximately 1 hour

Please RSVP today to in-fo@pandf.org.au or ph. 07 33369242

(Light refreshments will be served)





SHALOM CATHOLIC COLLEGE presents

SCREEN AGERS

MON 12th JUN at 7:00PM

SHALOM CATHOLIC COLLEGE
PERFORMING ARTS THEATRE, QLD



MAKE THIS HAPPEN!

FAN-FORCE SCREENINGS ARE RUN BY REAL FANS. THEY ONLY HAPPEN IF ENOUGH TICKETS ARE SOLD. DON'T WORRY-WE ONLY CHARGE YOU IF IT GOES AHEAD. JOIN THE CONVERSATION AT [PARENTECH.COM.AU](http://parentech.com.au)

Screenagers

There will be a screening of the documentary type film "Screenagers" at Shalom College on Monday the 12th of June at 7pm. The cost will be \$5 per adult and a gold coin donation for children.

This is an issue that faces us all and we would encourage parents to make themselves and their children available for such an informative event.

Bookings can be made at the Shalom office either in person or by phoning 41558100.

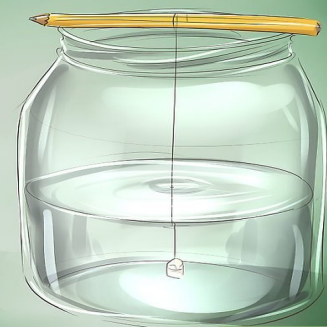
Please note all bookings should be made through Shalom College and not FanForce.

The link to the trailer is – <http://www.screenagersmovie.com/>

Glass Jars Required

Some of our classes are learning more about science by growing crystals in the classroom. We require clean, unlabelled 300ml glass jars. Please send any suitable jars, labels removed please, to the office.
Thank you!

Cathy Wilson



wild How to Grow Crystals



Tea Time Relay for Life High Tea Party



Saturday 3 June 2017 - 2pm

St Patricks Hall

Tickets \$25 each

Table bookings welcome

Tickets available from
the Parish Office

41 516666

Come along for a fun filled afternoon to
raise money for the Parish team



STUDENT TRAVEL REBATES Semester 1, 2017



Bus Fare Assistance

- Does your child attend a school outside the Brisbane City Council boundary?
- Does your family spend more than \$33/week* on fares to and from school (* \$25/week if you hold a concession card)?
- Does your child travel on a publicly available bus not owned or associated with the school?

Students With Disability

- Does your child have a verified disability that requires transport assistance to and from school?
- Has your school's learning support teacher assessed your child's travel capability rating as 'semi-independent' or more dependent?

Visit our website to see if you qualify for financial assistance to help with the cost of transport and apply at www.schooltransport.com.au by 31 May 2017.

Late applications cannot be accepted.

NCCD notice for parents

All schools in Australia are required to participate in the 2017 Nationally Consistent Collection of Data on School Students with Disability. Please click the image below for further information.



Nationally Consistent
Collection of Data
School Students with Disability